



## PL2302 Prolific v1.2.10

The prolific adapter interfaces one (1) RS232 to one (1) USB. For use with the MoundTech Mass Spec, two (2) Prolific adapters are required.

Installation:



1) From the CD, copy **SW-1301\_v1.2.1.zip** to your computer's desktop

2) Unzip (extract) the files

3) Open the newly created desktop folder **SW-1301\_v1.2.1**



4) Run **PL2303\_Prolific\_DriverInstaller\_v1210.exe**

5) The computer will assign each cable as it is connected to each USB port



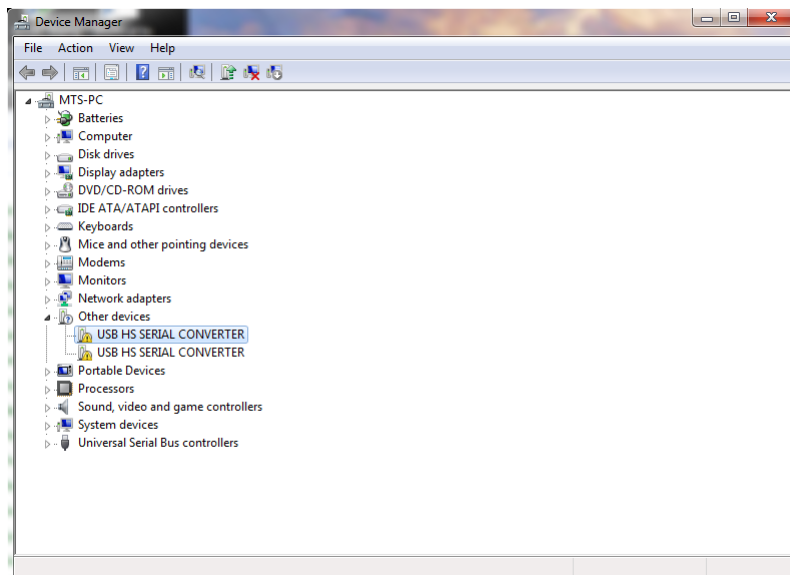
## CDM20808 FTDIBUS

The FTDIBUS adapter interfaces two (2) RS232 to one (1) USB. For use with the MoundTech Mass Spec, one (1) FTDIBUS adapter is required.

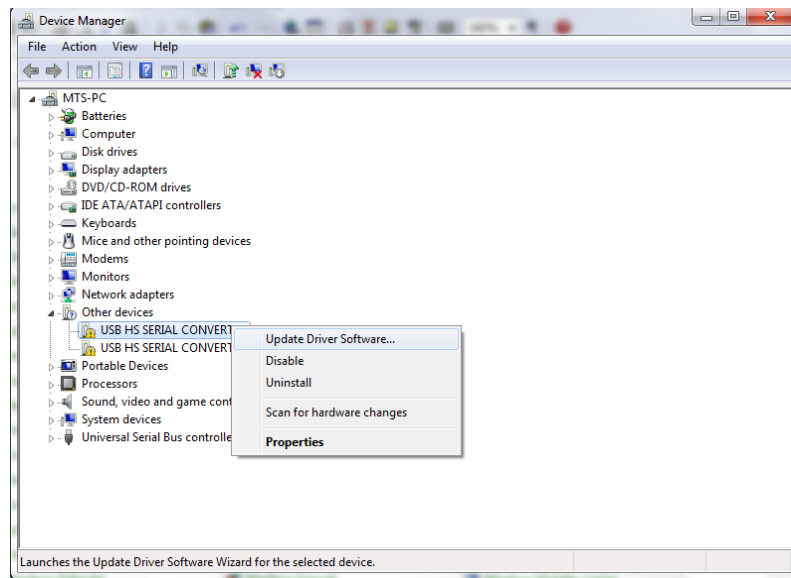
Installation:



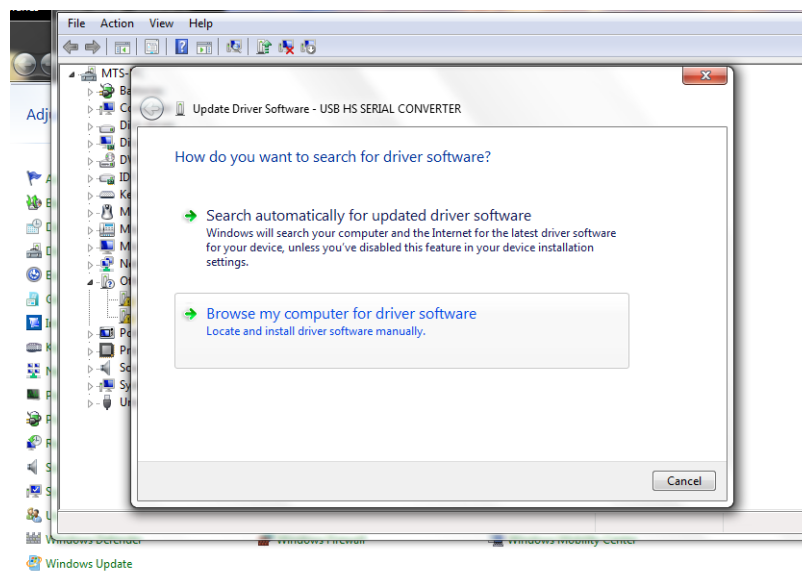
- 1) From the CD, copy **Cdm20808.zip** to your computer's desktop
- 2) Unzip (extract) the files
- 3) Open Windows Device Manager
- 4) Plug in FTDIBUS adapter USB to your computer USB port
- 5) Notice that the Device Manager listing is updated:



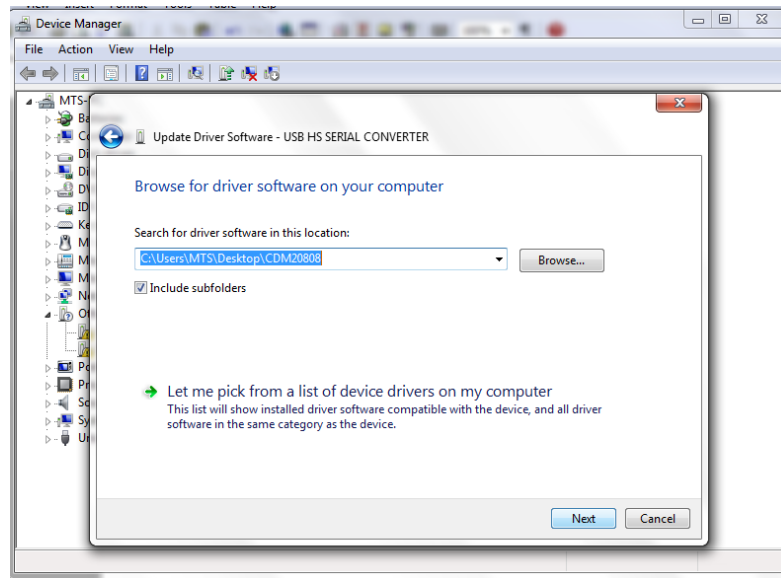
- 7) Right-click on the 1<sup>st</sup> “USB HS SERIAL CONVERTER” and Select “Update Driver Software...”



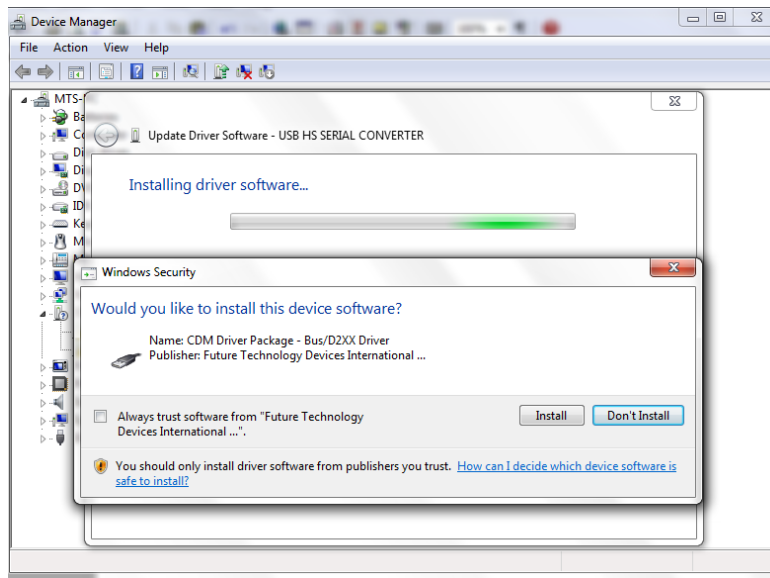
- 8) Select “Browse my computer for driver software” option



- 9) Browse to the unzipped location (desktop folder CDM200808), check include subfolders, and click “Next”



- 10) You will be asked if you want to install the CDM Driver Package published by FTDI, select “Install”



- 11) The computer will now install the Dual RS232 to USB device driver and assign separate ports for each RS232 connection