



Mound Technical Solutions, Inc.

965 Capstone Dr. POB 203 Miamisburg, OH 45343 USA
937.865.3715 www.moundtech.com

TRITIUM BUBBLER MODEL MRB100

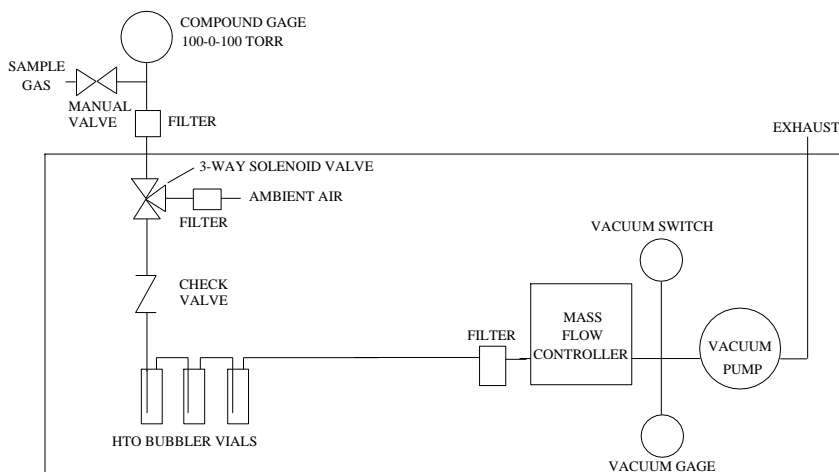
The MRB100 HTO Bubbler is the state-of-the-art, three-vial, single stage tritium bubbler collection instrument. It is a complete HTO collection system. The basis for the design of this instrument began at the DOE's Mound facility in Miamisburg, Ohio in the early 1980's. The same people involved with that development work have developed this device and other models in the series such as the MRB500.

MTS UNIQUELY OFFERS

- ◆ Experience in the design, fabrication, maintenance, and evaluation of Bubbler instruments since 1981
- ◆ Evaluation of several designs and components over several years has established a knowledge base for quality and reliable construction
- ◆ Well documented operating and maintenance procedures provide detailed information
- ◆ Comprehensive Quality Assurance testing performed and documented on each production unit
- ◆ Capabilities include follow-up calibration of mass flow controller and complete instrument operational evaluation and calibration
- ◆ On-site, telephone, fax, and e-mail support are provided during and after the "front panel to back panel" one (1) year guarantee of materials and workmanship
- ◆ All makes of scintillation vials can be used with the instrument

**Mound Technical Solutions • 965 Capstone Drive Suite 326 • P.O. Box 203
Miamisburg, Ohio 45343-0203
phone: 937-865-3715 • fax: 937-865-4890 • www.moundtech.com**

PRINCIPLE OF OPERATION



Sample gas enters the instrument and flows through three (3) standard scintillation counter ready vials of ethylene glycol which retain the HTO component. The sample gas, now less the tritiated water vapor, flows the precision mass flow controller which regulates the sample flow through the instrument. The user has control over the flow rate in the range of 20 to 200 sccm.

SPECIFICATIONS

Dimensions:..... cabinet footprint: 17" W X 9.25" H X 17"D
overall w/gas sample accessory: 17"W X 18" H X 24"D

Weight: 30 lbs

Flow control:..... Electronic mass flow controller (20-200 sccm/min) with flow display and adjustment located on front panel. Pressure and flow alarm indication warns of out-of-spec operation.

System protection:..... In-line filter to protect flow controller and pump; Check-valve and venting mechanism to protect against glycol back-flow; Vacuum and pressure gauge to monitor system performance; Fault alarms.

Operating parameters: 5 to 40°C and 0 to 95% rh non-condensing.

Sensitivity: Detection limit of ambient air is at least 1E-10 $\mu\text{Ci/cc}$